

END

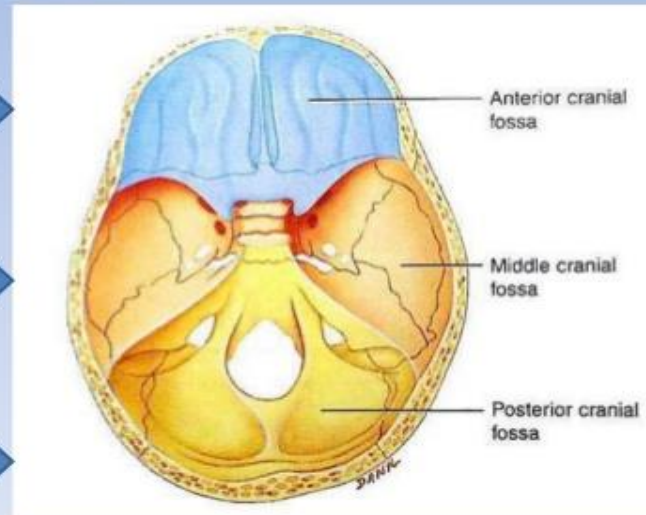
CRANIAL FOSSA:

The cranial base is divided into the following three **cranial fossae**, with each having numerous foramina (openings) for structures to pass in or out of the neurocranium.

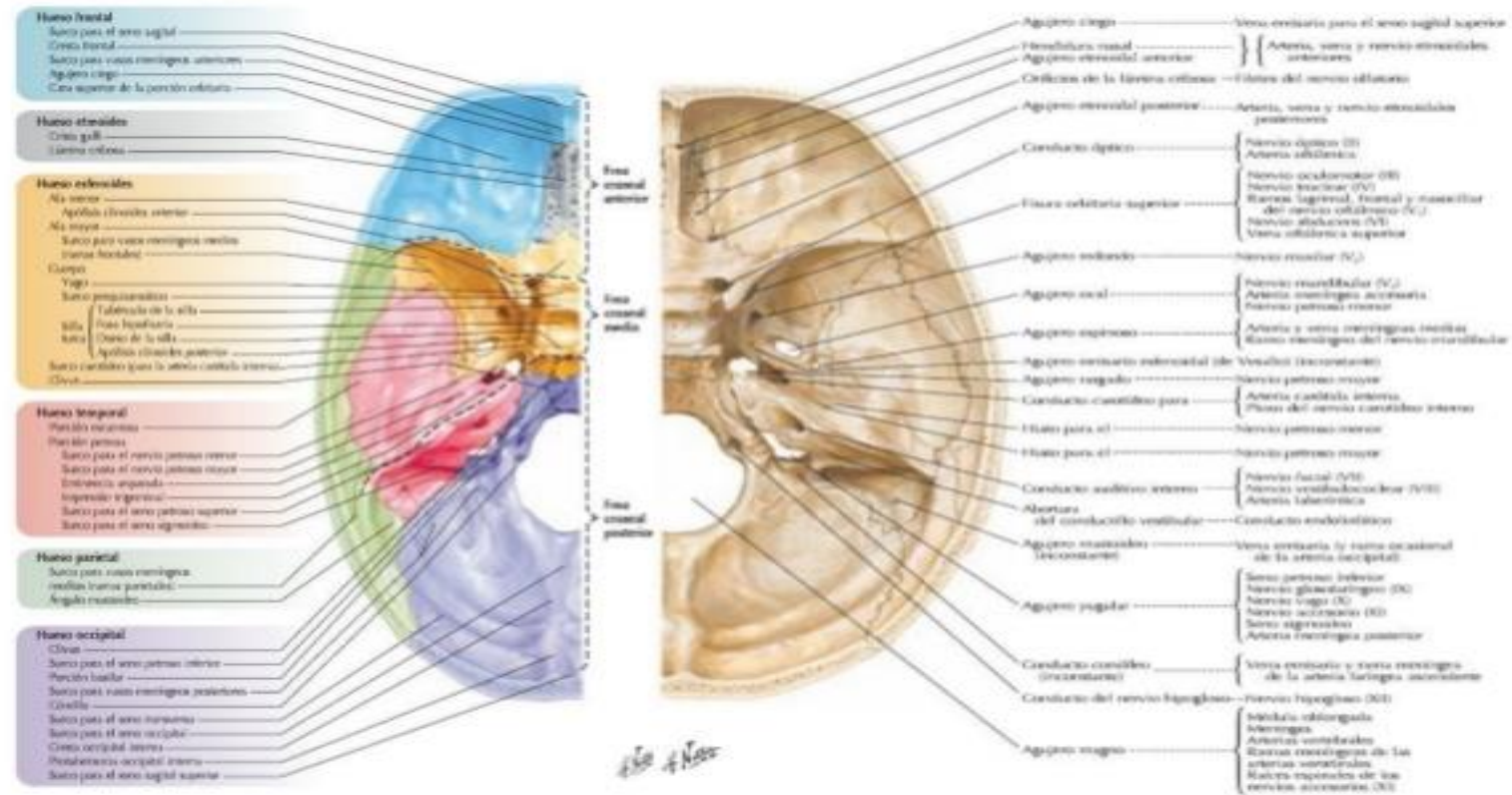
❖ Anterior cranial fossa. →

❖ Middle cranial fossa. →

❖ Posterior cranial fossa. →



middle cranial fossa



Middle cranial fossa

The middle cranial fossa is located, as its name suggests, centrally in the cranial floor. It is said to be “butterfly shaped”, with a middle part accommodating the **pituitary gland** and two lateral parts accommodating the **temporal lobes** of the brain •

Borders

The middle cranial fossa **consists of three bones** – the sphenoid bone and the •
two temporal bones.

Its boundaries are as follows: •

Anteriorly and laterally it is bounded by the **lesser wings** of the sphenoid bone.

These are two triangular projections of bone that **arise from** the **central**
sphenoid body.